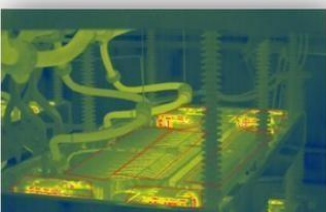


# DG-VL Series

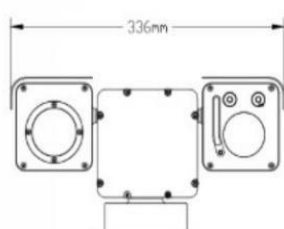
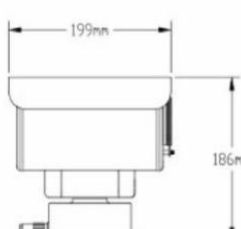


## Feature

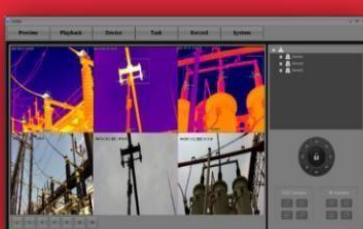
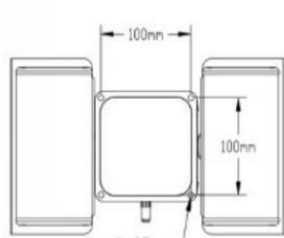
- ◆ 384 x 288 / 640 x 480 Pixels
- ◆ Full real-time display
- ◆ Supports angle feedback
- ◆ Small size and light weight
- ◆ The interface is rich and convenient for integration
- ◆ Temp measurement range -20°C~ 600°C

## Application

Suitable for temperature measurement applications in electronic, and rail transport, industrial equipment, valve hall, power distribution rooms, etc.



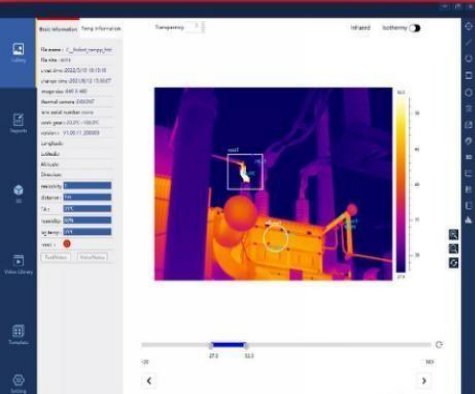
## DIMENSIONS



## Monitoring system



## Data analysis software



Item		DLSC-RL			
		DLSC-RL315	DLSC-RL330	DLSC-RL625	DLSC-RL642
Thermal	Detector type	Uncooled FPA			
	Resolution	384x288		640x480	
	Pixel pitch	17μm			
	Thermal sensitivity	±0.06°C@F1, 300K			
	Spectral range	8-14μm			
	Motorized lens	15mm	30mm	25mm	42mm
	FOV	25°*19°	12°*9°	25°*19°	15°*11°
	IIFOV	1.13	0.56	0.68	0.40
	Focus mode	Auto focus/Single step focus			
Palettes	A variety of pseudo-colour codes (fire code, iron red, red hot, amber, white-hot, black hot, etc.)				
CCTV camera	Detector	1/2.8"CMOS			
	Resolution	1920x1080			
	Lens	4.8~120mm, 25 X Optical zoom			
	Low illumination	Color:0.05 Lux @(F1.6); B/W:0.01Lux @(F1.6)			
	WDR	Support			
	D/N	Support			
	DNE	3D			
Pan-tilt system	Focus	Auto/Semi-auto/One Step focus			
	Horizontal range	0°~360°Continuous			
	Horizontal velocity	0.01°~30°/S			
	Vertical range	-90°~+90°			
	Vertical velocity	0.01°~15°/S			
	Angle feedback	Support			
	Preset No.	200			
	Communication	Pelco-P/Pelco-D			
Wiper	Support				
IR lamp	Optional				
Image	Max image output	1920x1080 (camera) , 640x480/384x288 (Thermal)			
	Video Output	PAL/NTSC			
	Raw image	25FPS		20FPS	
Function	Type	Maximum temperature cross positioning			
	Mode	Point measurement and area measurement (highest temperature, lowest temperature and average temperature)			
	Range	-20°C-600°C			
	Accuracy	±2°C or ±2%(whichever is greater)			
	High temperature alarm	Alarming when exceeding warning threshold			
System	Integration protocol	ONVIF			
	communication interface	RJ45			
	RS485	Support			
	Audio in	Optional			
	Audio out	Optional			
General specifications	Power consumption	DC24V±10%			
	Working temp	-20°C~ +50°C			
	Storage temp	-40°C~ +70°C			
	Power consumption	≤50W			
	Size	336*199*186mm			
Physical	Encapsulation	IP66			
	Weight	5KG			

### Sales Office

Email: [info@digitronicssolution.com](mailto:info@digitronicssolution.com)

Website: [www.digitronicssolution.com](http://www.digitronicssolution.com)

Address: 301 Samad Arcade, Near Kausa Kabrastan, Kausa

Mumbra-400612.

Office: +91 9768234946, +91 84528 71967,

+91 7021829855, +91 90048 61466.

